



## The Burke II



Northeastern Log Homes  
[info@northeasternlog.com](mailto:info@northeasternlog.com) 800-624-2797 [www.northeasternlog.com](http://www.northeasternlog.com)

\*Artist's rendering, photography and optional design ideas may vary from the standard model. Please always consult the standard floorplan and refer to the Traditional Home Series Material list as to what is included.





# The Burke II

## Traditional Home Series

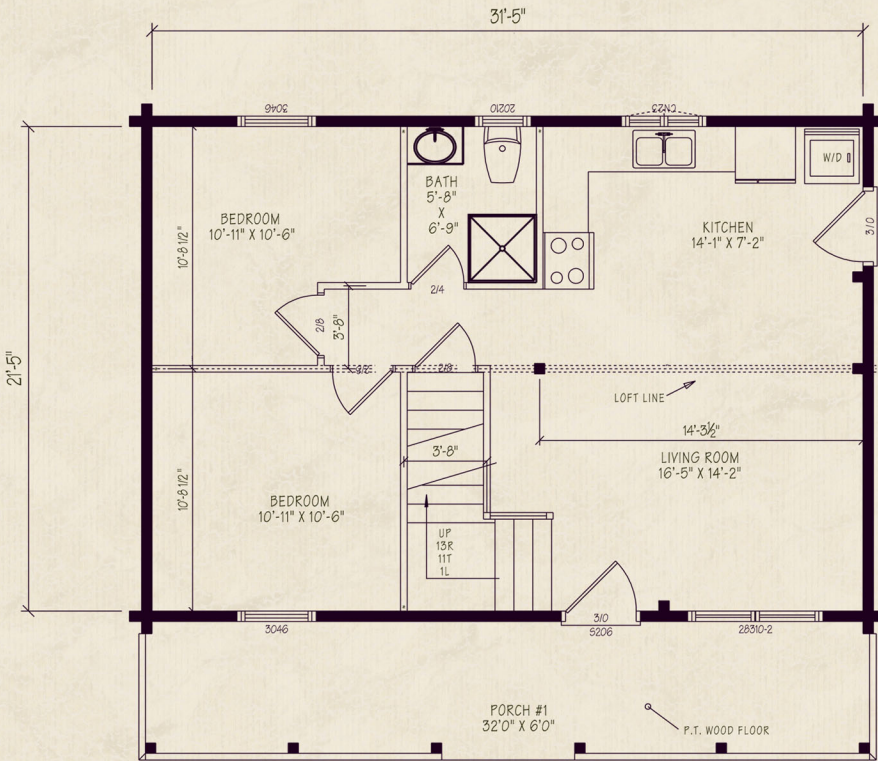
22' x 32' Size

1,218 Square Feet

Three Bedrooms

One Full Bath

The Burke II has a full cathedral ceiling on the entire second floor and open to below area via rafters & ridge beam with knotty pine v-match included below. The 1st to 2nd floor area is done via regular framing with knotty pine v-match optional for the 1st floor ceiling. Consult the Traditional Series material list for full details.



### Optional Design Ideas:

Make a first floor Master Suite by removing the partition between Bedroom #1 and Bedroom #2

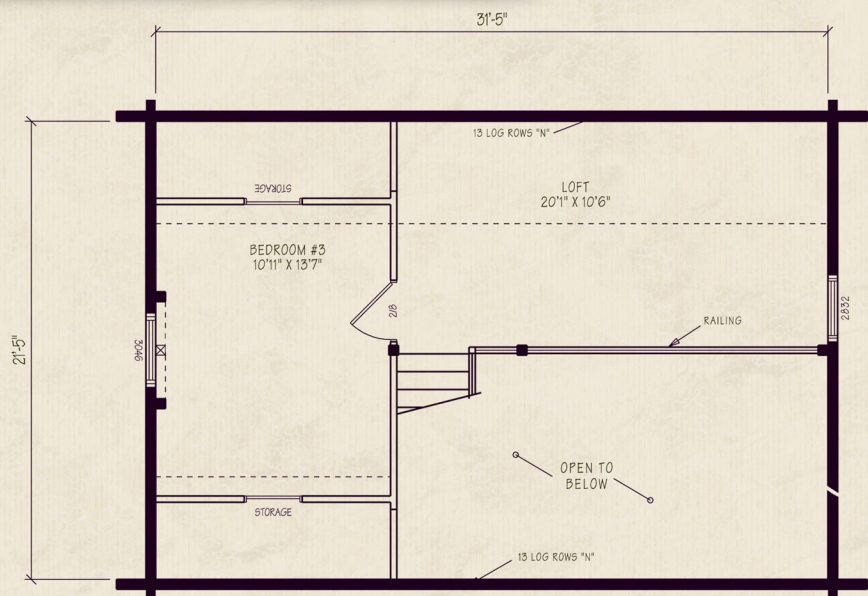
Install built-in pull-out drawers in the bedroom #3 storage area

Extend the rear dormer over the bedroom to utilize the entire second floor area

Put a wood stove next to the stairs

Add (2) windows on the right side of the living room for the view

Add a deck on the right side for evening gatherings



Northeastern Log Homes

info@northeasternlog.com 800-624-2797 www.northeasternlog.com

\*Artist's rendering, photography & optional design ideas may vary from the standard model. Please always refer to the standard floorplan and consult the Traditional Home Series Material List as to what is included.



# The Burke II

31'-5"

21'-5"

BEDROOM  
10'-11" X 10'-6"

BATH  
5'-8"  
X  
6'-9"

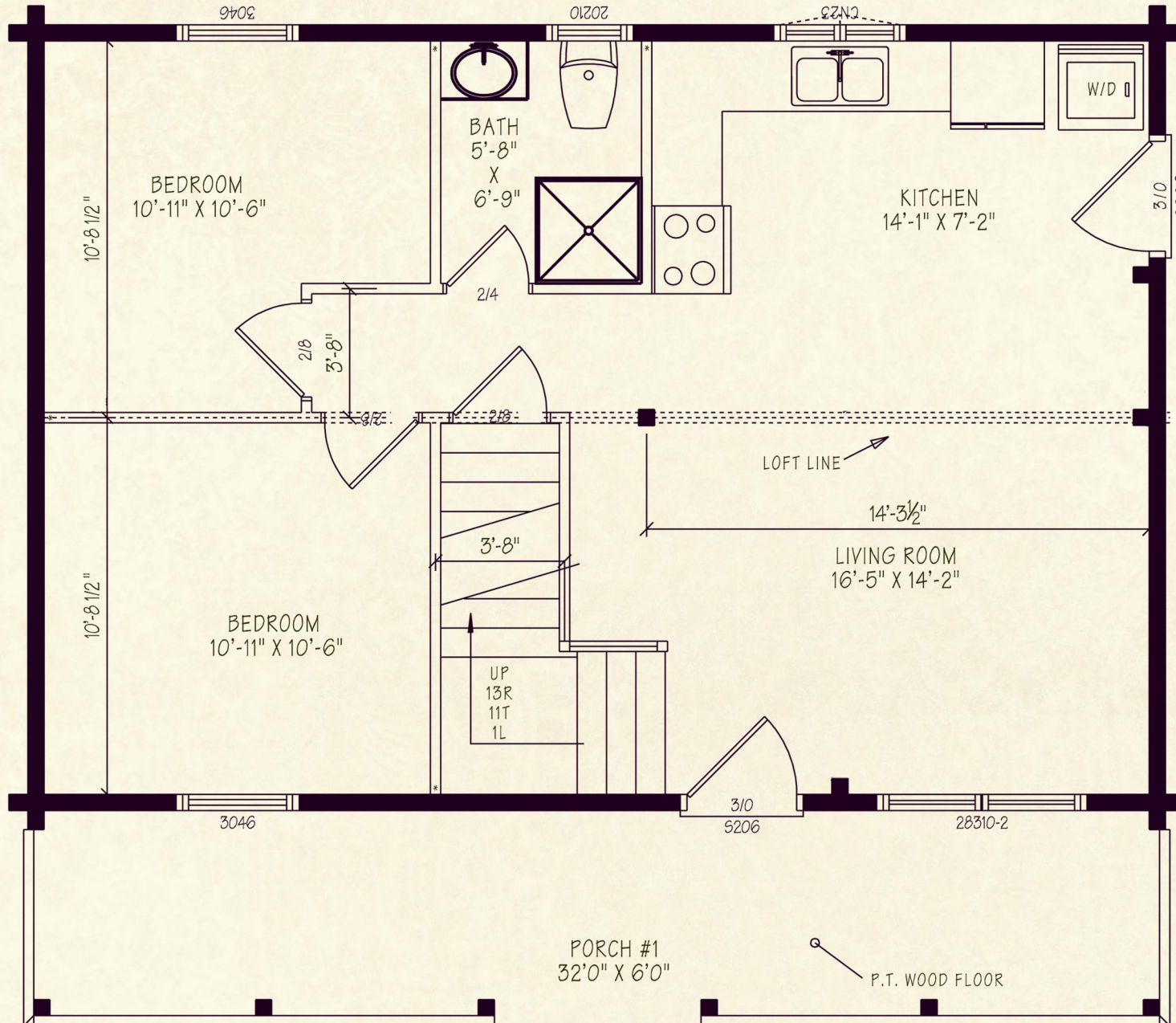
KITCHEN  
14'-1" X 7'-2"

LIVING ROOM  
16'-5" X 14'-2"

BEDROOM  
10'-11" X 10'-6"

PORCH #1  
32'-0" X 6'-0"

P.T. WOOD FLOOR





# The Burke II

